



SATELLITE MONITORING OF THE MINING AREAS

Jacek Strzelczyk
CEO

SATIM Monitoring Satelitarny Sp. z o.o.

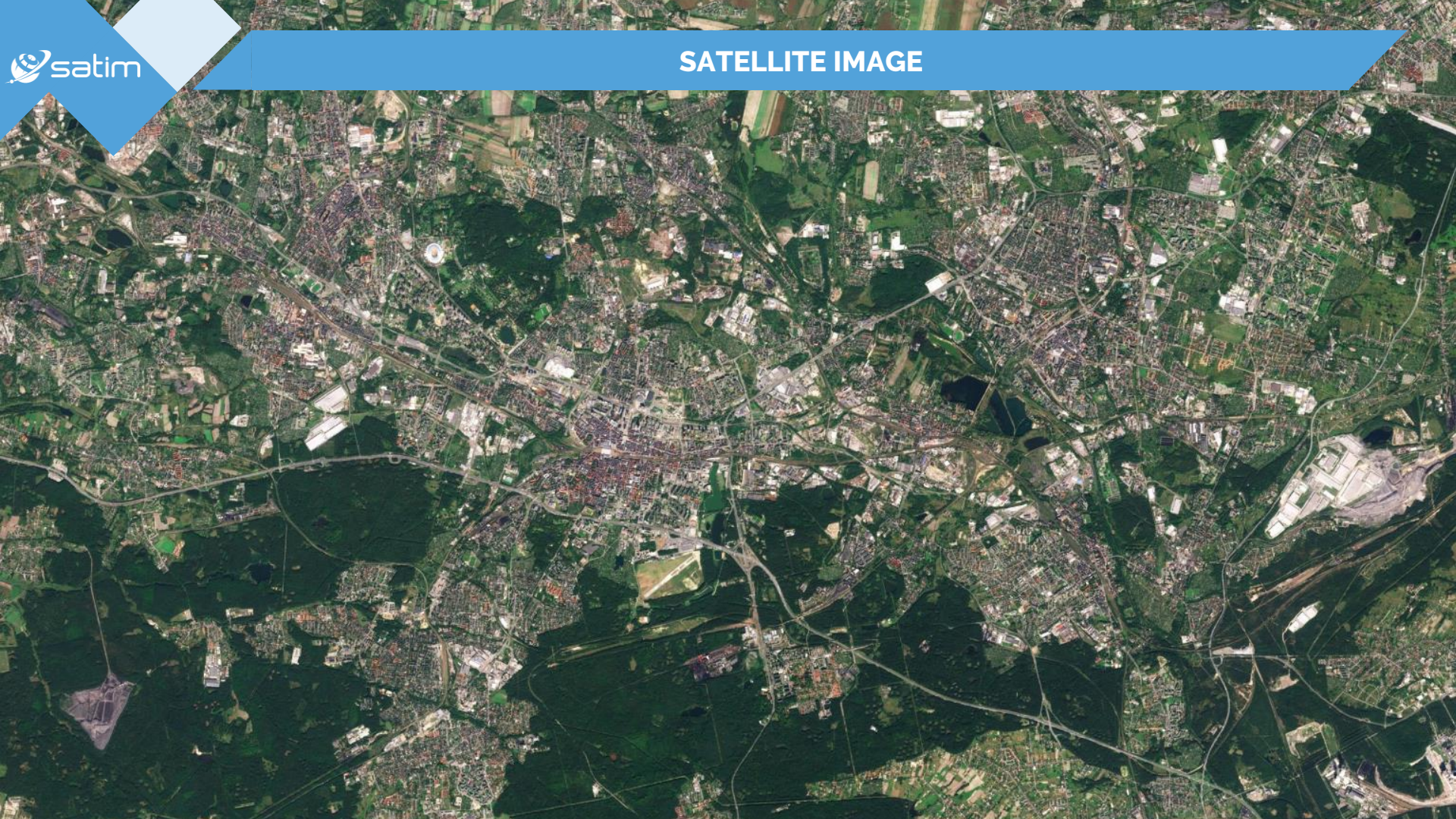
Phone: +48 694 906 428

Email: jacek.strzelczyk@satim.pl



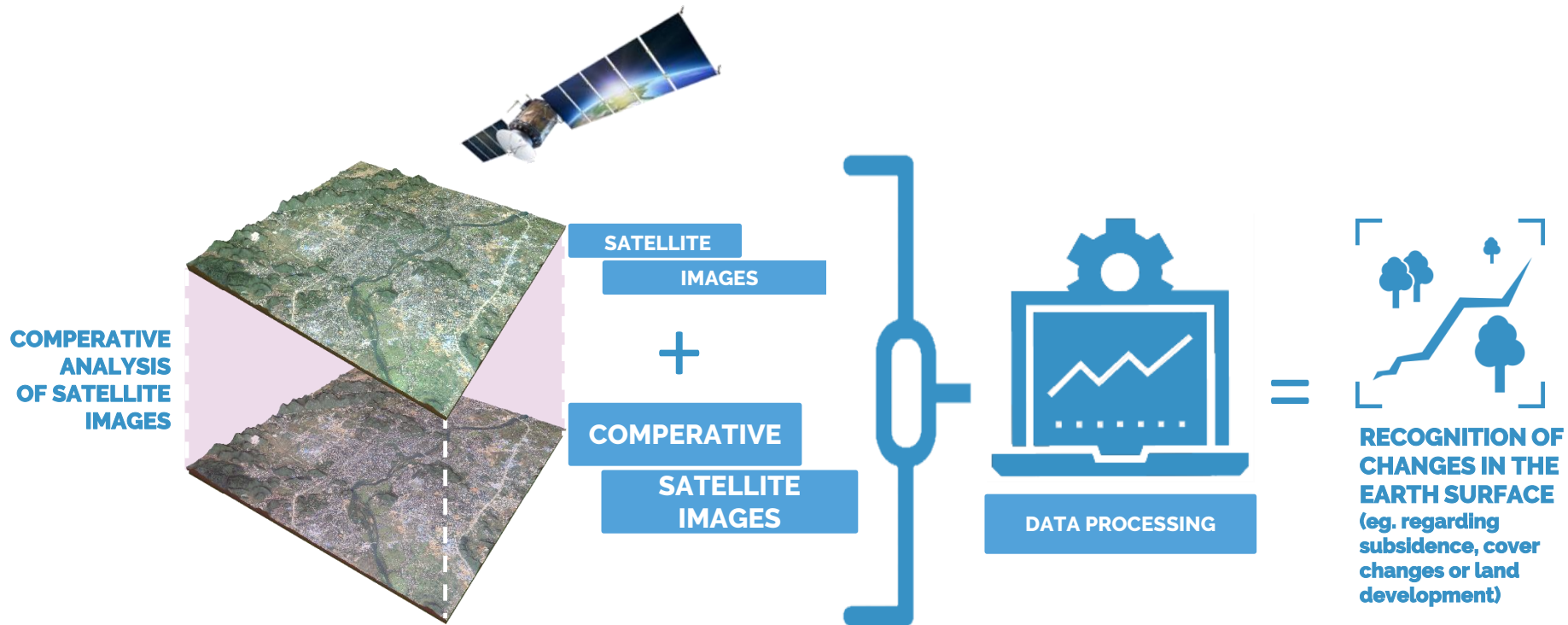


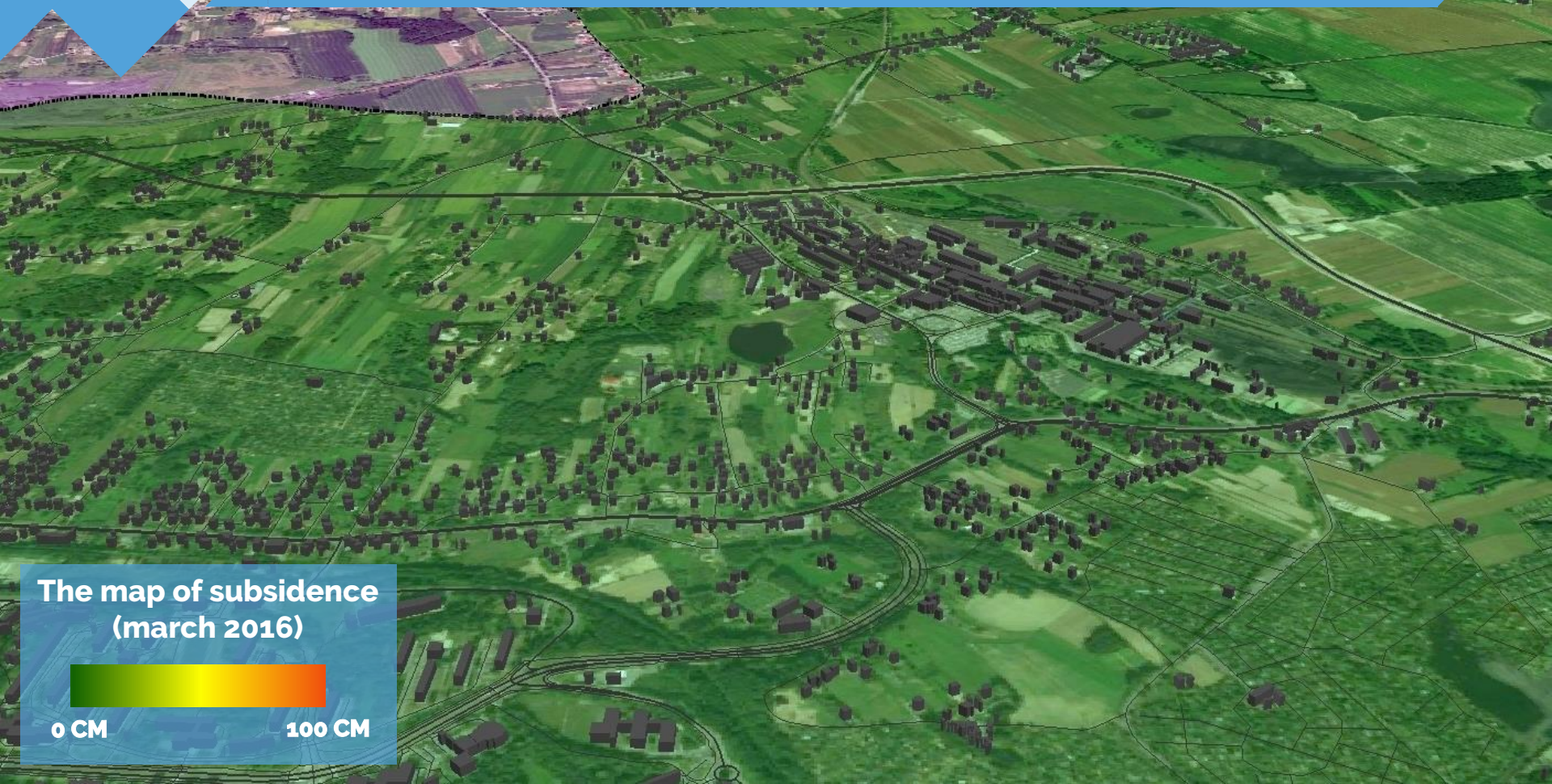




Jastrzębie-Zdrój

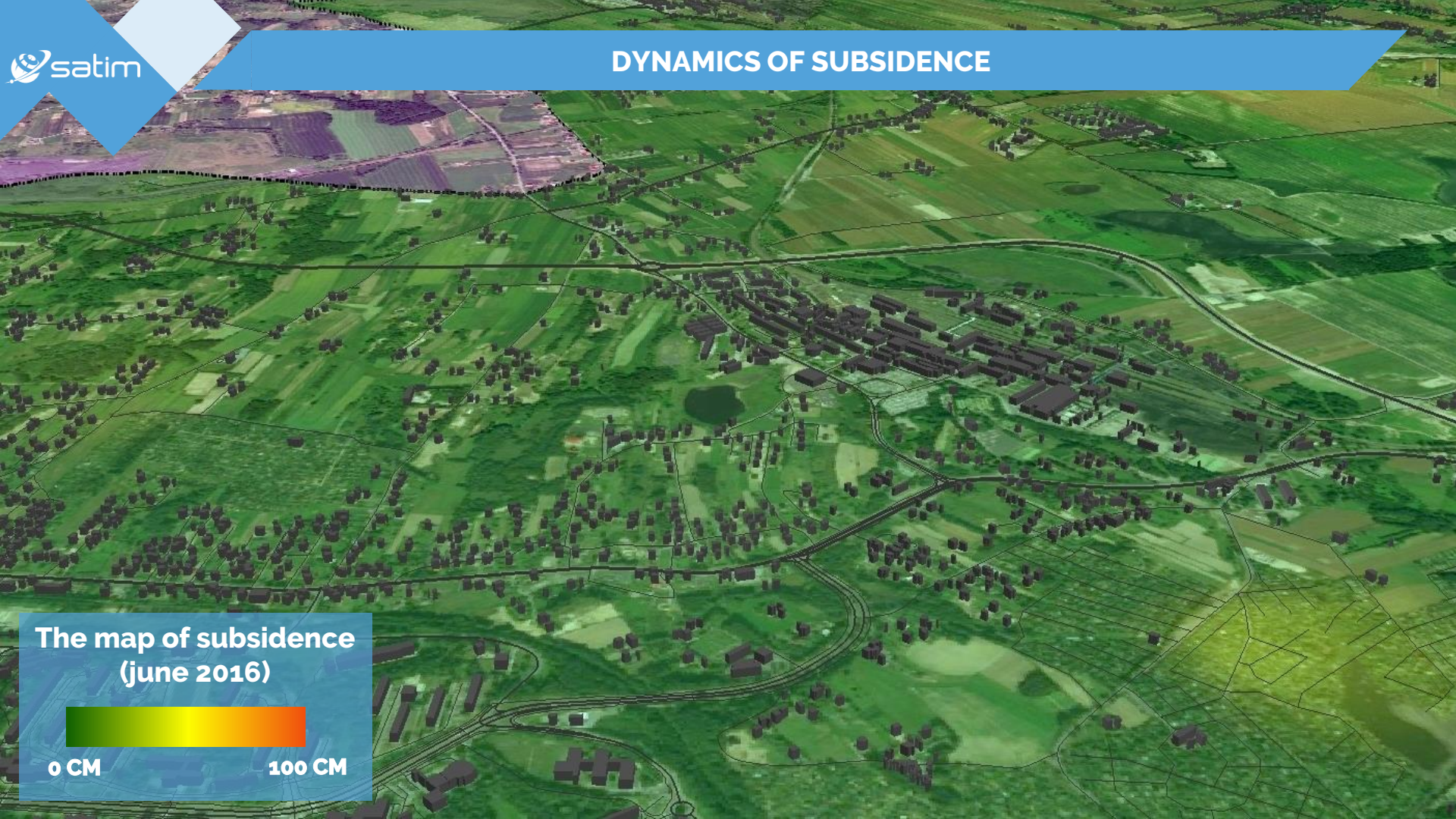
A satellite image of a landscape, likely a volcanic or post-volcanic area. The terrain is dark and heavily textured with numerous small craters and ridges. A yellow dashed line outlines a specific region on the left side of the image. The text 'Jastrzębie-Zdrój' is overlaid in yellow within this outlined region. To the right of the outlined area, there are several dark, irregular shapes that appear to be lakes or ponds.





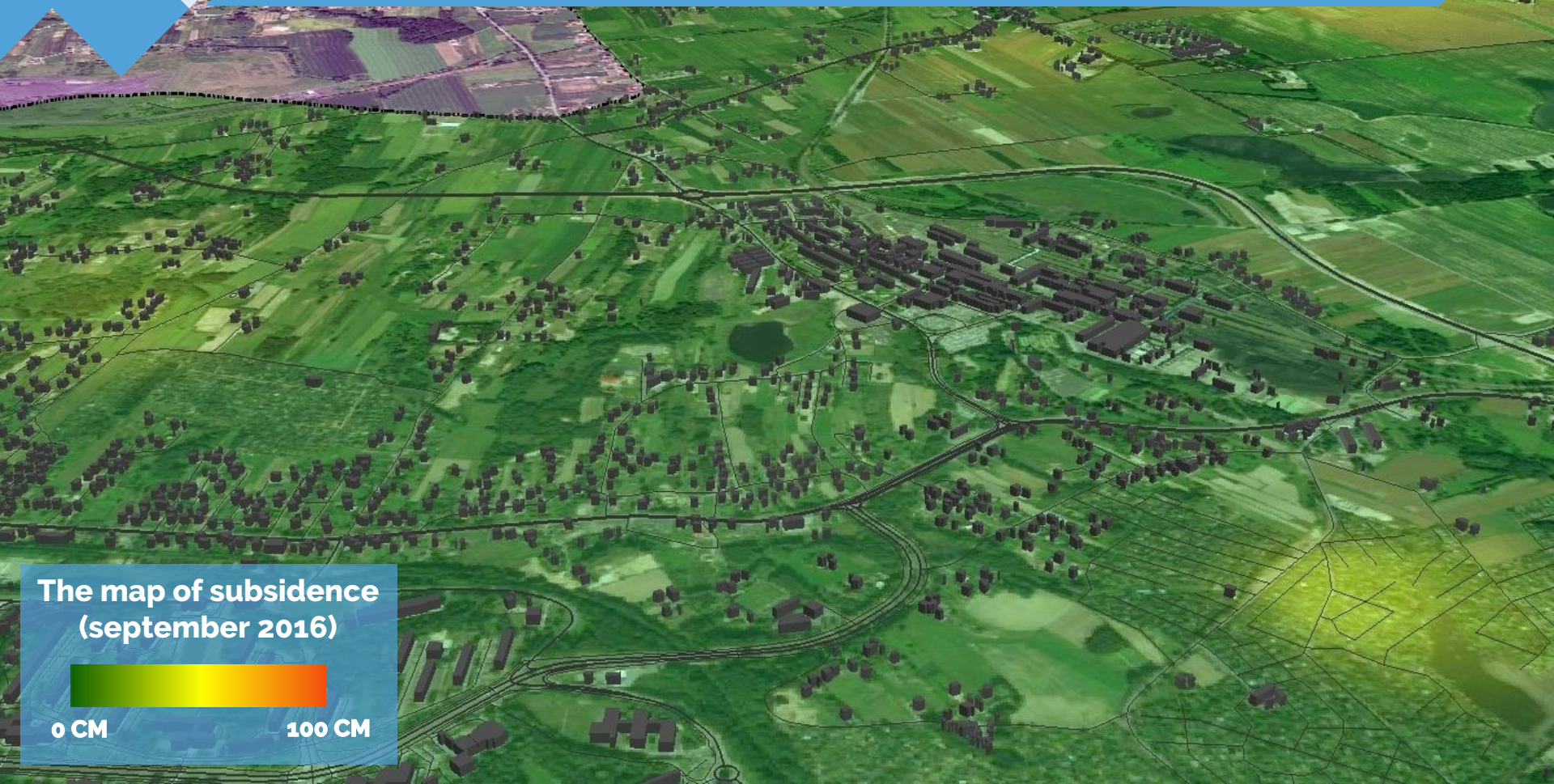
The map of subsidence
(march 2016)





The map of subsidence
(june 2016)



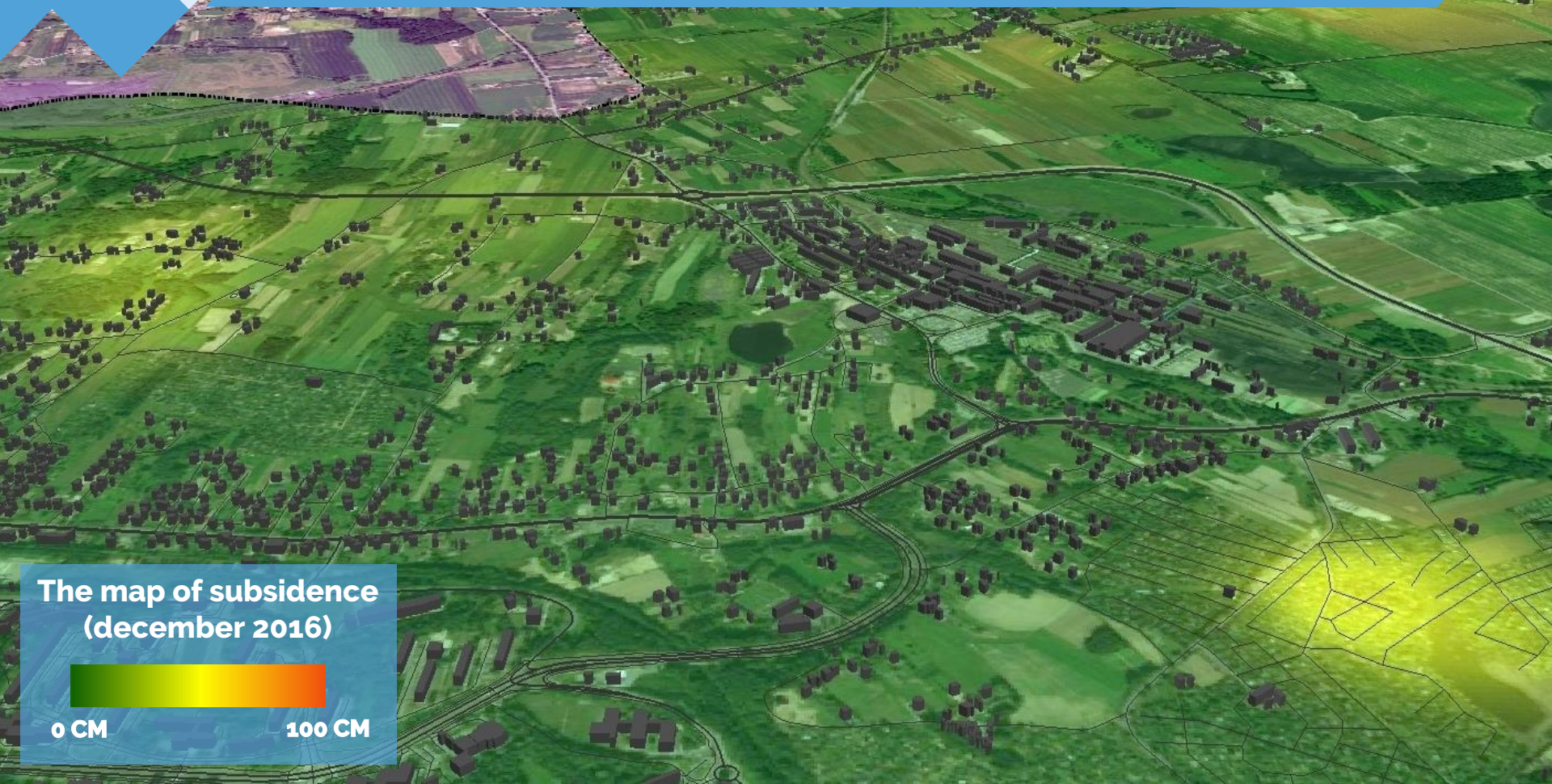


The map of subsidence
(september 2016)



0 CM

100 CM

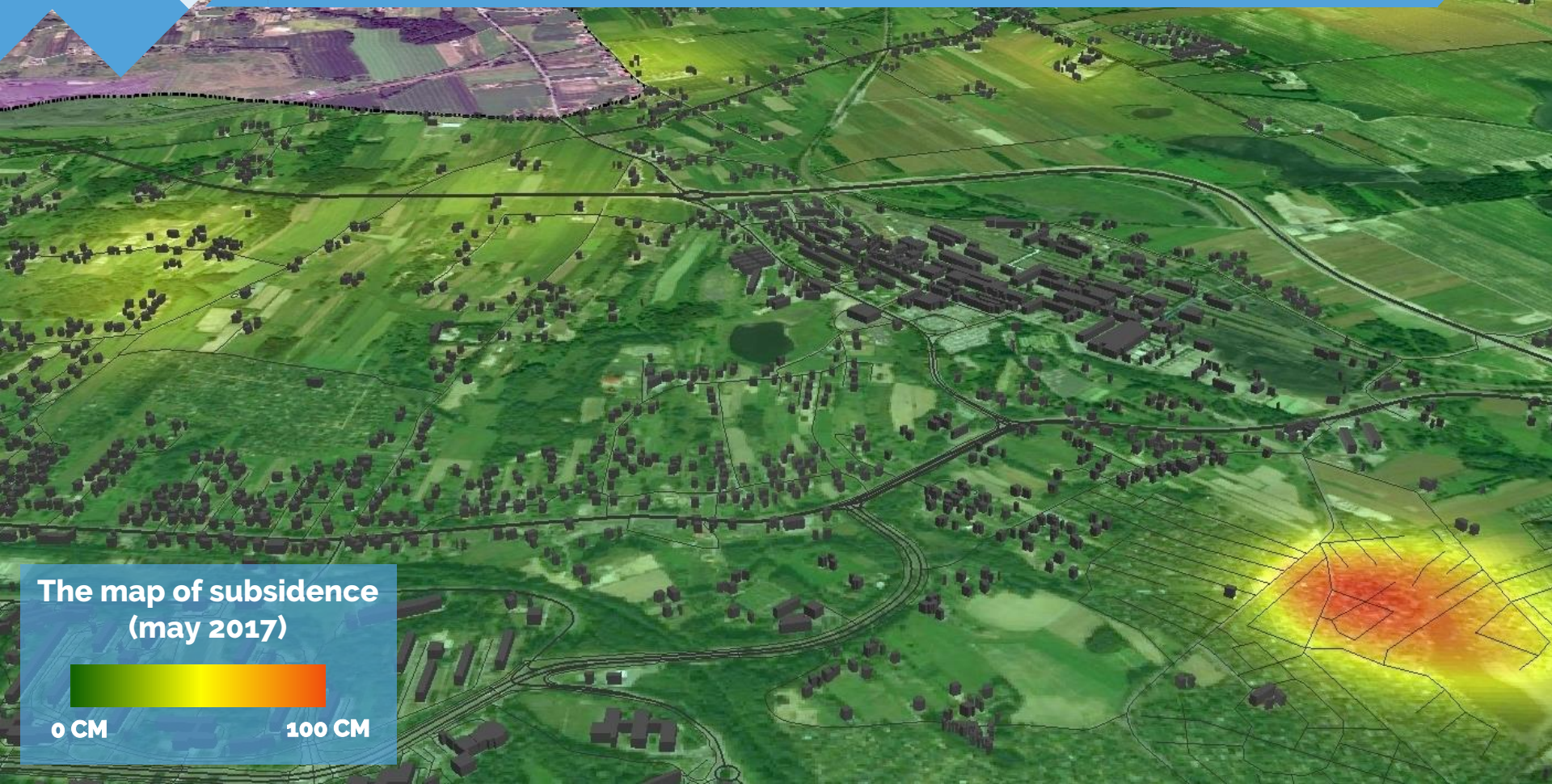


The map of subsidence
(december 2016)



0 CM

100 CM

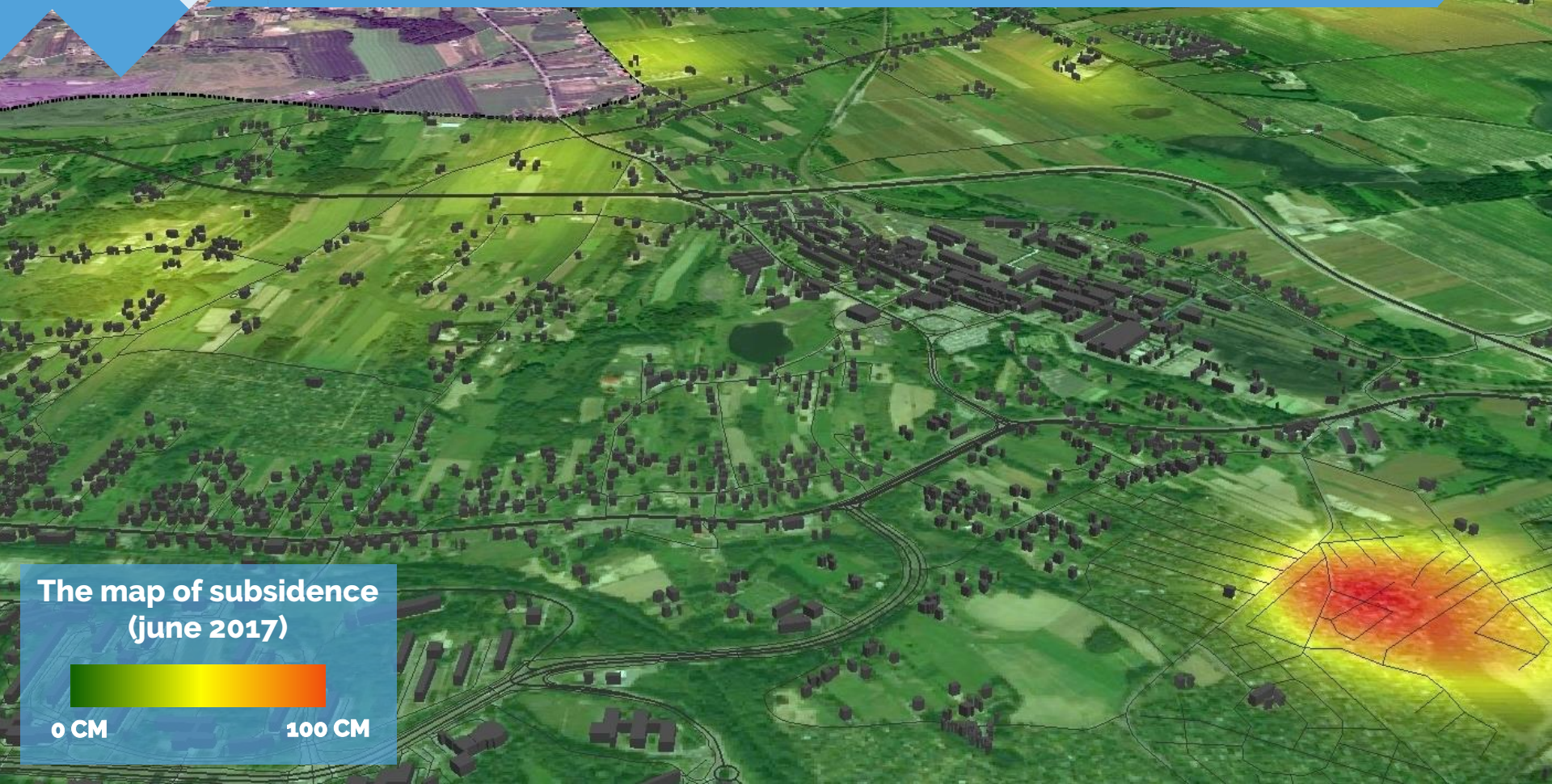


The map of subsidence
(may 2017)



0 CM

100 CM

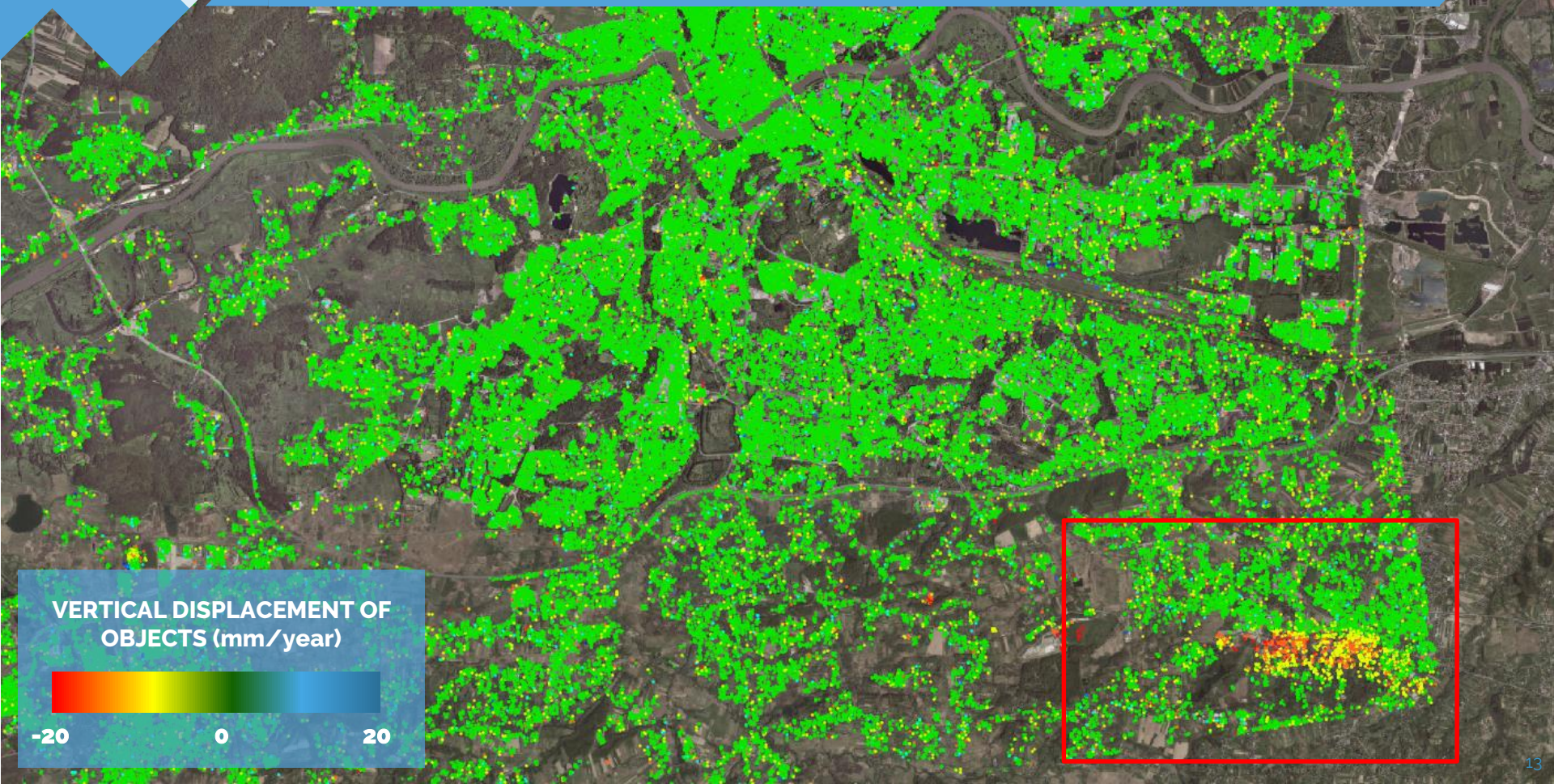


The map of subsidence
(june 2017)

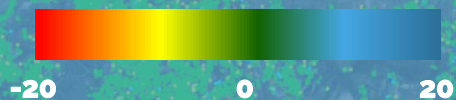


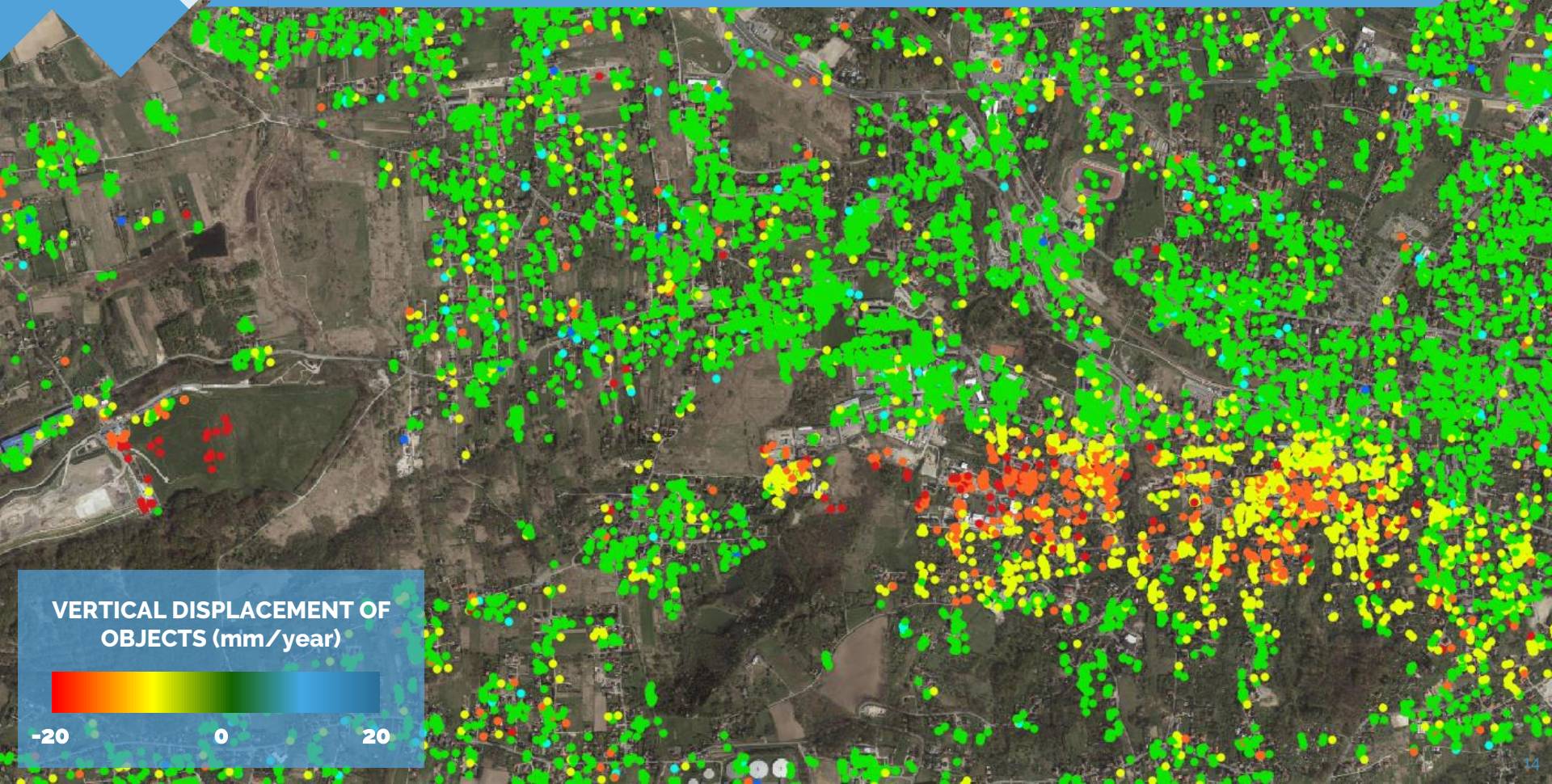
0 CM

100 CM



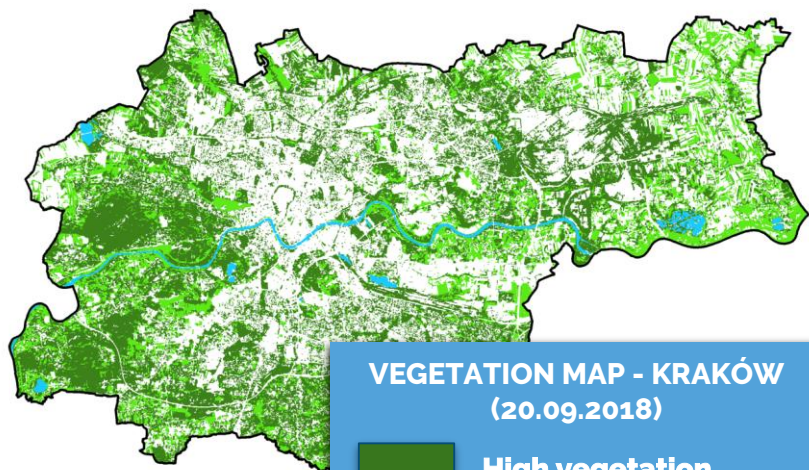
VERTICAL DISPLACEMENT OF
OBJECTS (mm/year)



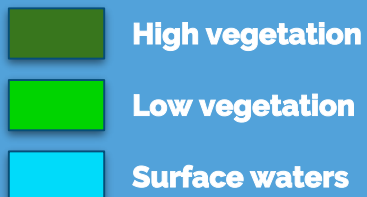


VERTICAL DISPLACEMENT OF
OBJECTS (mm/year)

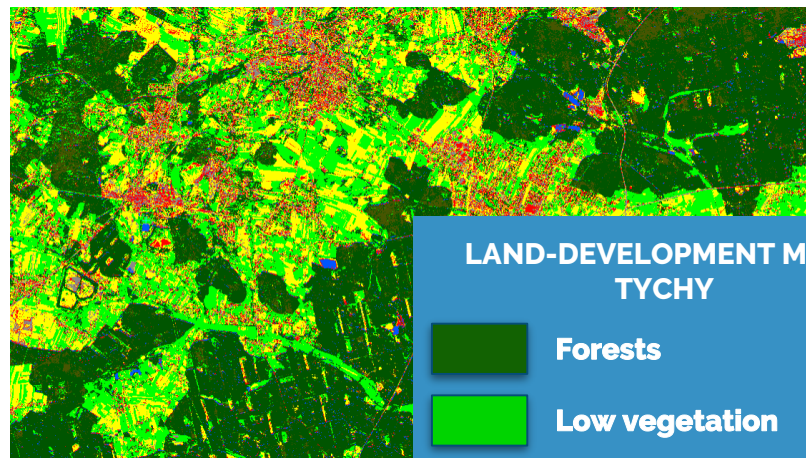




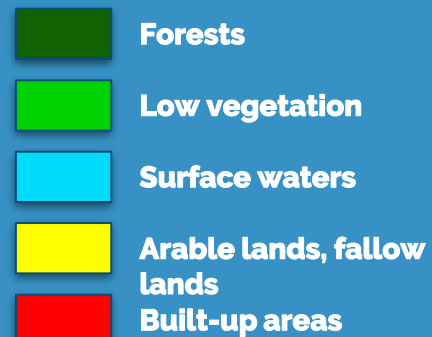
VEGETATION MAP - KRAKÓW
(20.09.2018)



THE MAP OF VEGETATION



LAND-DEVELOPMENT MAP - TYCHY



MAP OF LAND COVER AND TERRAIN USE



- ✓ **SUPPORT IN IMPLEMENTING THE IDEA OF CORPORATE SOCIAL RESPONSIBILITY**
- ✓ **AN INNOVATIVE AND COST-EFFECTIVE APPROACH TO OBTAINING INFORMATION ABOUT THE MINING AREA USING THE ACHIEVEMENTS OF THE POLISH SPACE INDUSTRY**
- ✓ **MONITORING THE IMPACT OF MINING OPERATIONS**
- ✓ **MITIGATION OF CONFLICTS BETWEEN THE MINE AND THE COMMUNITY**





THANK YOU

SATIM Monitoring Satelitarny Sp. z o.o.
Urzędnicza 36/1
30-048 Kraków

Jacek Strzelczyk
CEO

SATIM Monitoring Satelitarny Sp. z o.o.
Phone: +48 694 906 428
Email: jacek.strzelczyk@satim.pl

